

Presorted Standard
U.S. Postage
PAID
Oakland, CA
Permit NO. 2508

ANNUAL INSPECTION NOTICE

With important tips to
help you pass inspection
and protect your home

YOU ARE REQUIRED TO
KEEP YOUR PROPERTY IN
COMPLIANCE YEAR ROUND

INSPECTIONS BEGIN
MID MAY

FAILURE TO PASS INSPECTION WILL RESULT IN A MINIMUM \$303 FINE

You are receiving this notice because you live in a VERY HIGH FIRE HAZARD AREA. The Oakland Fire Department conducts approximately 26,000 public and private inspections annually in the high fire hazard area. These inspections are mandated by City of Oakland Ordinance No. 11640 and 12556 C. M. S. and the State of California PRC 4292. Failure to comply with requirements will result in fines, fees, and abatement costs.

The Wildfire Prevention Assessment District (WPAD), in collaboration with the Oakland Fire Department is able to provide you with this information to help you protect your home and property in the event of another urban wildfire.

IF YOU HAVE QUESTIONS PLEASE STOP BY YOUR LOCAL FIRE HOUSE.

**A NOTICE OF NONCOMPLIANCE STATES THAT YOU WILL BE RE-INSPECTED 30 DAYS AFTER YOUR FIRST INSPECTION.
PLEASE CALL 510-238-7388 FOR QUESTIONS OR WHEN YOU HAVE CORRECTED YOUR VIOLATION(S).**



Firehouses will raise a **RED FLAG** to warn residents of increased danger of wildfire in the Oakland Hills

RED FLAG DAYS!

WHAT TO DO:

- Park cars in driveway or garage to provide access for first responders
- Update Disaster Plan
- Clear dead weeds and vegetation around structures and gutters.

DO NOT:

- DO NOT use lawn mowers or other equipment that can set off sparks
- DO NOT BBQ, have campfires or set off fireworks (\$1000 fine)
- DO NOT discard cigarettes on roadside or dry grass
- DO NOT have trailer chains drag on ground
- DO NOT pull over or park on dry grass

SIGN UP FOR RED FLAG ALERTS FROM THE CITY OF OAKLAND: www.oaklandnet.com (bottom left corner of home page)

RESOURCES

For additional information on how you can make your property and neighborhood fire safe:

CITY OF OAKLAND FIRE PREVENTION/ VEGETATION MANAGEMENT:
www.oaklandnet.com/wildfireprevention
(510) 238-7388

CAL FIRES: Fire Safety Education. www.calfire.ca.gov/communications/communications_factsheets.php

OAKLAND FIRESAFE COUNCIL:
www.oaklandfiresafecouncil.org

DIABLO FIRESAFE COUNCIL:
www.diablofiresafe.org

INSURANCE INSTITUTE FOR HOME AND BUSINESS SAFETY
www.disastersafety.org/wildfire/defensible_space

The WPAD offers homeowners
matching grants!
More information may be found at
www.oaklandnet.com/wildfireprevention/



FREE Chipping of Small Tree Limbs & Brush
Please call City of Oakland's Vegetation Management to find out more and to schedule service.
(510) 238-7388

Visit the Demonstration Garden
at the Gateway Emergency
Exhibit Center above Highway 24
at Caldecott Lane for ideas on
how to meet Oakland's
defensible space requirements.

FREE Extra Yard Trimming Pick Up
By WASTE MANAGEMENT
Just put your extra yard trimmings in an additional container, paper bag or bundle twigs with twine no longer than 4 feet by 6 inches in diameter.

PLEASE HELP FIREFIGHTERS HELP YOU. NARROW STREETS REDUCE ACCESS, SO PLEASE PARK IN DRIVEWAY

The WPAD

In 2004 the Oakland Wildfire Prevention Assessment District (WPAD) was approved by Assessment District Voters to assess a tax to property owners in high fire hazard areas in the City of Oakland. The WPAD is a group of 10 community members working with the Oakland Fire Department to provide oversight of the funding, programs, and special vegetation projects to ensure California State Fire Code compliance.

The WPAD has been able to supplement fire prevention, suppression and preparedness programs, and local area projects above what was provided by the Oakland Fire Department, including Roving Fire Patrols, public outreach and education, goat grazing, and brush removal for private property owners.

WPAD Advisory Committee meetings are held on the 3rd Thursday of each month, 7-9 PM at Trudeau Training Center 11500 Skyline Blvd. Open to the public.

FOR MORE INFORMATION ABOUT FIRE PREVENTION AND THE WPAD. www.oaklandnet.com/WildfirePrevention

YOU ARE REQUIRED TO KEEP YOUR PROPERTY IN COMPLIANCE YEAR ROUND

OAKLAND FIRE DEPARTMENT INSPECTIONS HELP TO ENSURE YOU ARE IN COMPLIANCE, BUT IT IS UP TO OWNERS TO UNDERSTAND AND IMPLEMENT THESE FIRESAFE PRACTICES

Your home and property may be your most important investment. Protect your investment and help give firefighters a fighting chance by keeping a good defensible space around your home.

ZONE 1: 0 - 5 FEET FROM BUILDINGS, STRUCTURES & DECKS, ETC.

Reduce the chance of wind blown embers igniting materials near your home, exposing it to flame.

- Maintain and clear shrubs and brush of dead vegetation. (CFC 4907.1)
- Trim tree limbs within 10 feet of roof. (CFC 4910.2.2.4)
- Clear rain gutters of dead leaves and debris. (CFC 4907.1.5)
- Remove ivy and any vines climbing on house or trees, they act as a "fire ladder". (CFC 4907.1.4)
- Spark arrestors are required on all fireplaces. (CBC 3102.3.8)
- Stored firewood at least 20 feet from structures. (CFC 4907.1.1)
- Your house number must be clearly visible from the street and at least 4 inches in height and in a contrasting color. (CFC 505.1)
- Maintain 6 inch clearance between the ground and the start of your house siding.

ZONE 2: 5 - 30 FEET FROM BUILDINGS, STRUCTURES & DECKS, ETC.

Create a landscape that will not readily transmit fire to the home.

- Cut grass to six inches or less. (CFC 4907.1)
- When clearing vegetation use care when operating electric and gas powered equipment such as lawnmowers, one small spark may start a fire; a string trimmer is much safer.
- Large trees do not have to be cut and removed as long as all of the plants beneath them are maintained to provide the appropriate spacing. This eliminates a vertical "fire ladder". (CFC 4907.1.4)
- Remove tree limbs within 6 feet from the ground. (CFC 4910.2.2.4)
- Wood chips must be less than 6 inches deep, no piles. (CFC 4907.1)

*CFC, California Fire Code

*CBC, California Building Code

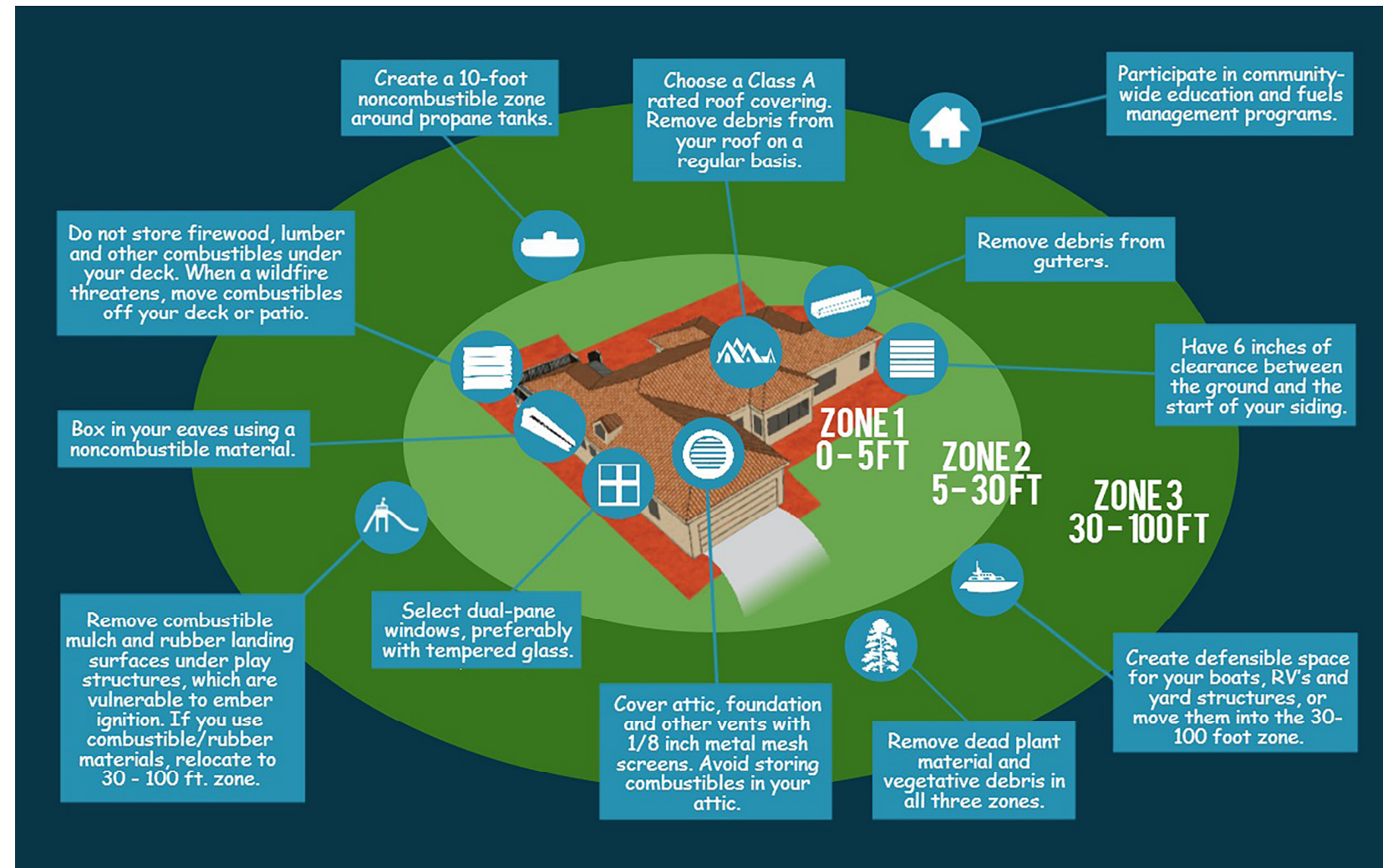


Illustration used with permission from the Insurance Institute For Business and Home Safety



Illustration used with permission from CAL FIRE

MINIMUM VERTICAL SPACING BETWEEN TREES AND SHRUBS

- Remove all tree branches at least 6 feet from the ground.
- If shrubs are under trees, additional vertical space may be needed. The lack of vertical space can allow a fire to move from the ground to the shrub to the tree like a ladder.

EXAMPLE:

A five foot shrub is growing under a tree.

5 x 3 = 15 feet of clearance needed between the top of the shrub and the lowest tree branch.

ZONE 3: 30 - 100 FEET FROM BUILDINGS, STRUCTURES & DECKS, ETC.

Reduce the energy and speed of the wildfire.

- Maintain plants and shrubs under trees to eliminate a vertical "fire ladder".
- Maintain a defensible space, clearing dead brush and debris.
- Be aware of the vertical and horizontal slopes on your property and use proper spacing to prevent "fire ladders".
- When clearing vegetation, use care when operating gas powered equipment, one small spark may start a fire.

MINIMUM HORIZONTAL SPACING FOR TREES AND SHRUBS

Horizontal spacing depends on the slope of the land and the height of the shrubs or trees. Check the diagrams below to determine spacing distance.

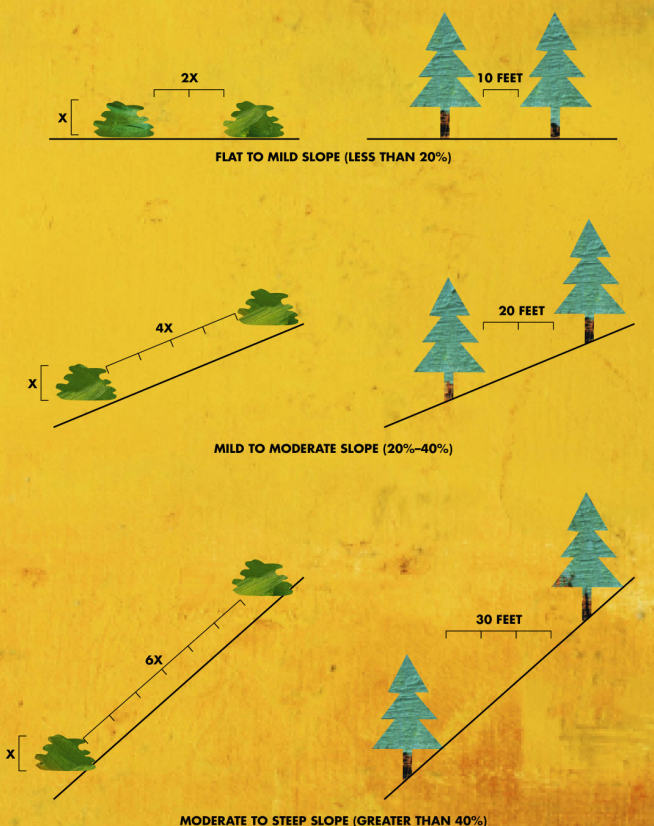


Illustration used with permission from CAL FIRE